



2016 PRIMARY ELECTION PROFILE

# CALIFORNIA



**ELECTION DAY:**  
**TUESDAY, JUNE 7, 2016**

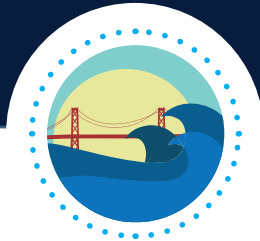
**ELECTORAL COLLEGE VOTES: 55**

**TOTAL POPULATION (2014):**

**38,802,500**

**LATINO POPULATION (2014):**

**14,988,770**



Since 1992, California has been a Democratic state in Presidential contests, with the Democratic candidates' margins of victory ranging from 10% to 24%. President George H.W. Bush was the last Republican to win the state in 1988.

The Latino vote played a key role in California's partisan shift towards generally electing Democratic Presidential and statewide candidates. For example, according to CNN exit poll data, in the 1998 U.S. Senate race where incumbent Senator Barbara Boxer (D) faced a challenge from then-State Treasurer Matt Fong (R), Whites supported Fong over Boxer by 46% to 50%. In contrast, Latinos supported Boxer over Fong by 72% to 23%. In the same election, Whites favored gubernatorial candidate Gray Davis (D) over Dan Lungren (R) by a narrow 50% to 46% margin. In contrast, Latinos favored Davis over Lungren by 78% to 17%.

The Latino role in California's partisan re-alignment resulted in part from the harsh tone of the anti-immigrant rhetoric in the public dialogue in the mid 1990's. The state's voters enacted Proposition 187, which would have denied certain benefits to undocumented immigrants, and several federal anti-immigrant measures were enacted as well. Many California Latinos held Republicans responsible for these measures, and the state's Latinos naturalized and voted in record numbers. In 1994, the number of newly-naturalized Californians from Mexico totaled 14,824 and they comprised 16% of the state's 90,279 new U.S. citizens.<sup>1</sup> In 1996, the total number of newly-naturalized Californians reached 378,014, with 151,959 – or 40% - coming from Mexico.

Similarly, in 2006 and 2007, the passage of H.R. 4437 by the House of Representatives, which would have criminalized undocumented presence in the United States, together with the failure of comprehensive immigration reform to move forward in Congress, helped mobilize Latinos in California and nationwide. Hundreds of thousands of Latinos took to the streets in the spring of 2006, culminating in a national day of boycott on May 1. In California, naturalizations again increased significantly, and the Mexican share of new U.S citizens from the state doubled from 20% in 2004 to 40% in 2008. The number of newly-naturalized California citizens from Mexico in 2008 reached 118,062, the second highest number in the state's history. In Election 2016, the Presidential candidates are engaging in an extremely robust debate about the future of our nation's immigration policy, and the extent to which this dialogue affects Latino participation in California and nationwide is a trend which bears watching.

The Latino vote in California also had a significant impact during California's 2008 Democratic primary, where Latinos helped ensure that Hillary Clinton's delegate count remained competitive with that of Barack Obama's, and enabled her to remain a viable presence until the end of the primary season. According to CNN exit polls, among California's White Democrats, Clinton's margin of victory was extremely narrow, 46% to 45%. In contrast, the state's Latino Democrats favored Clinton over Obama by 67% to 32%.

According to February 2016 voter file data, over half of California's Latino registered voters are Democrats (54%) and they comprise 30% of the state's Democrats. The Latino vote will be critical to the outcome of the 2016 California primary contest between Clinton and Senator Bernie Sanders (D-VT), with both candidates seeing the state as critical for sustaining the momentum of their respective campaigns.

---

<sup>1</sup> California's Latino naturalized citizens also include immigrants from other countries in Latin America and the Caribbean, such as Colombians, Cubans, Dominicans, Ecuadorians, Salvadorans and Guatemalans. Because the federal Office of Immigration Statistics does not provide comparable data for the naturalization of those immigrants in California for the years discussed in this *Profile*, our analysis focuses solely on the naturalization of Mexican legal permanent residents. Moreover, while the community of Latino legal permanent residents in California continues to become more diverse, the number of those from Mexico are still far greater than those from other countries in Latin America or the Caribbean.

# CONGRESSIONAL RACES

U.S. Rep. Loretta Sanchez (D) is a contender in the primary race for the seat being vacated by retiring U.S. Senator Barbara Boxer (D). Under California's "top two" primary system, all candidates for state and Congressional offices are listed on one ballot and only the top two vote-getters in the primary election - regardless of party preference - move on to the general election. As a result, two Democrats could emerge as the candidates in the general election, and political observers see California Attorney General Kamala Harris (D) as Sanchez's likely opponent in November 2016.

In the U.S. House of Representatives, nine of the 10 incumbent Latino Democrats are seeking re-election, and eight do not face serious opposition in their primaries: Pete Aguilar, Xavier Becerra, Tony Cardenas, Lucille Roybal-Allard, Raul Ruiz, Linda Sanchez, Norma Torres and Juan Vargas. In California's 32nd Congressional district, State Assemblymember Roger Hernandez (D) faces a tough contest in his bid to unseat incumbent U.S. Rep. Grace Napolitano (D).

Other Latinos who are challenging incumbents in the primary include business owner Joe Montes (R), who faces U.S. Rep. Doug LaMalfa (R) in the 1st Congressional district; retired U.S. Marshal Tony Amador (R), who faces U.S. Rep. Jerry McNerney (D) in the 9th Congressional district; and business owner Rafael Dagnesses (R), who faces U.S. Rep. Julia Brownley (D) in the 26th Congressional district.

In the 21st Congressional district, attorney Emilio Huerta (D) and Fowler Mayor Pro-Tem Daniel Parra (D) are battling for the opportunity to face U.S. Rep. David Valadao (R) in the general election. With Latinos comprising over half (58%) of the registered voters in the district, this race is likely to be very competitive in both the primary and general election.

Latinos in open seat contests include Santa Barbara County Supervisor Salud Carbajal (D), who is seeking the 24th Congressional district seat being vacated by retiring incumbent U.S. Rep. Lois Capps (D). In the 44th Congressional district, former Hermosa Beach City Councilmember Nanette Barragan (D) is running for the seat being vacated by U.S. Rep. Janice Hahn (D) - Hahn hopes to win a position on the Los Angeles County Board of Supervisors. U.S. Rep. Sanchez's pursuit of a U.S. Senate seat leaves an opening in the 46th Congressional district, and former State Senator Lou Correa (D) is among the contenders for this position.

# CALIFORNIA'S LATINO POPULATION: 2014

	POPULATION	SHARE OF TOTAL POPULATION
All Latinos	14,988,770	39%
Latino Adults	10,237,984	35%
Latino Voting-Age Citizens	6,907,428	28%

# CALIFORNIA'S LATINO ELECTORATE\*

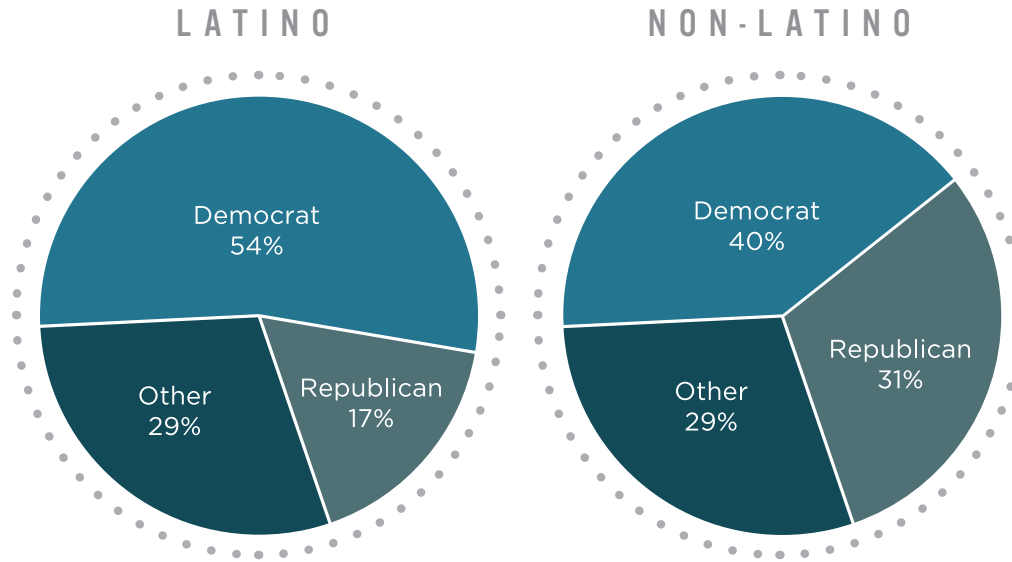
Nearly one of every four  
California registered voters  
(24%) is Latino.

\* as of February 2016

Total Registered Voters	17,075,641
Latino Registered Voters	4,151,397
Latino Share of Registered Voters	24%

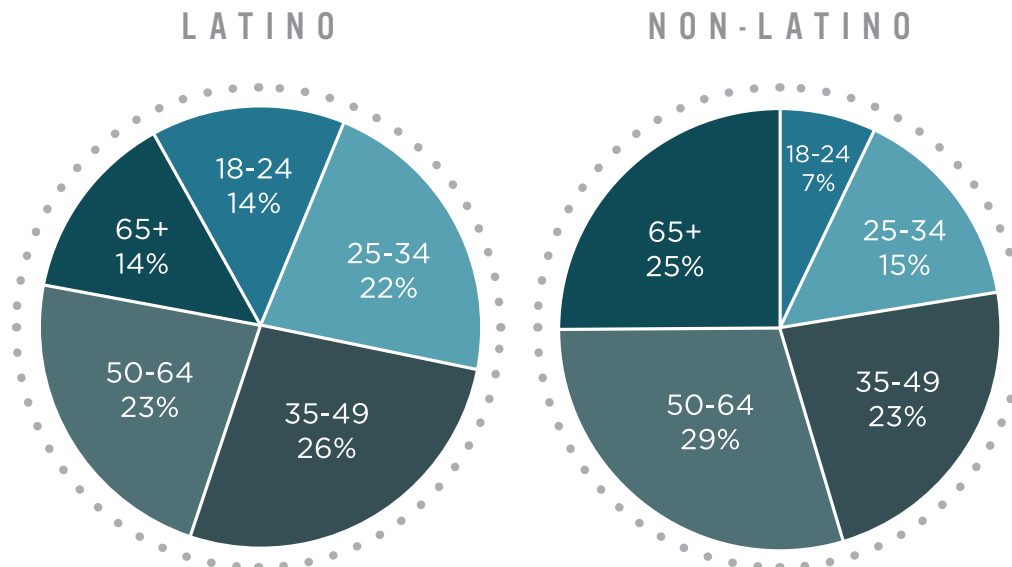
# PARTY AFFILIATION

California's Latino registered voters are more likely to be registered Democrats than non-Latinos (54% compared to 40%). Similarly, Latinos are far less likely to be registered as Republicans than non-Latinos (17% compared to 31%). Twenty-nine percent of both Latinos and non-Latinos are not affiliated with either major party.



# AGE

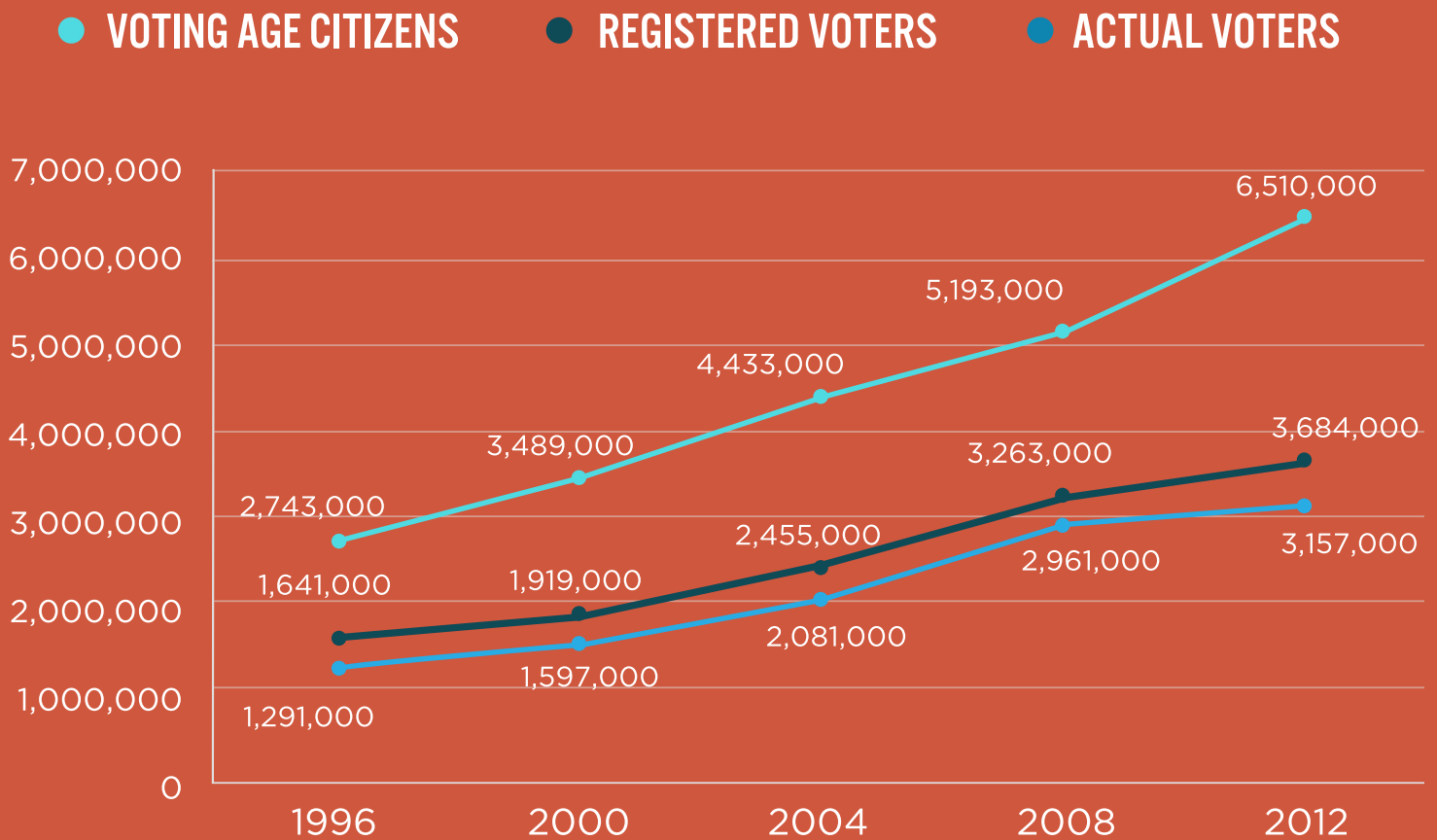
California's Latino registered voters tend to be younger than non-Hispanics with 18-24 year olds comprising 14% of registered Hispanics, compared to 7% of non-Latinos. Similarly, 22% of Latino registered voters are 25-34 year olds, compared to 15% of non-Latinos. In contrast, over half (54%) of non-Latino registered voters are 50 and older, compared to 37% of Latinos.



Totals may not add up to 100% because of rounding.

# VOTER TURNOUT

Latino voter turnout in California more than doubled from 1996 to 2012, growing from 1,291,000 to 3,157,000, an increase of 145%.



# LATINOS IN CALIFORNIA ELECTED OFFICE

In 2015, 1,377 Latinos served in elected office in California, with 98% serving at the local level, including county, municipal, school board, judicial and law enforcement, and special district officials.

## LATINOS IN CALIFORNIA ELECTED OFFICE: 1996 – 2015

	1996	2001	2005	2011	2015
U.S. Senators	0	0	0	0	0
U.S. Representatives	4	6	7	6	10
State Officials	0	1	1	0	1
State Legislators	14	26	29	22	23
Local Officials	675	734	1,043	1,278	1,343
<b>TOTAL</b>	693	767	1,080	1,306	1,377



For more information about the NALEO Educational Fund's Election 2016 publications, please contact Rosalind Gold at [rgold@naleo.org](mailto:rgold@naleo.org) or (213) 747-7606, ext. 4420.



# SOURCES

NALEO Educational Fund, *2015 National Directory of Latino Elected Officials*.

This report uses data from the U.S. Census Bureau's 2014 American Community Survey (ACS), 1-year estimates. The ACS is conducted every year and is an on-going survey of a sample of the population which produces estimates of various population characteristics.

U.S. Department of Homeland Security, Office of Immigration Statistics, *Yearbooks of Immigration Statistics* (or their predecessor yearbooks), 1994 - 2014.

Office of U.S. Census Bureau, Current Population Survey (CPS), *Voting and Registration in the Elections of November: 1996-2012*. The CPS data used in this report and the survey from which they are derived are subject to certain limitations. First, actual voter turnout and registration may be overestimated by the CPS, because individuals may tend to over-report electoral participation. Additionally, the CPS is a national survey, and estimates derived for smaller sub-groups within the national population may be based on relatively small sample sizes. Consequently, the margin of error associated with estimates of voting and registration for these sub-groups is greater than the margin associated with the national population or larger population sub-groups.

NGP Voter Activation Network (VAN) voter file data, February 2016. VAN data are subject to certain limitations relating to the collection, entry, maintenance and analysis of voter file records.