

# LOCAL HAZARD MITIGATION PLAN



El Paso, Texas

Lt. Thomas Quinn

Assistant Emergency Management Coordinator

[Quinntx@elpasotexas.gov](mailto:Quinntx@elpasotexas.gov) (915) 838-3260

**2015**  
**El Paso County, Texas**  
**Multi-Hazard**  
**Mitigation Action Plan**



**URS**



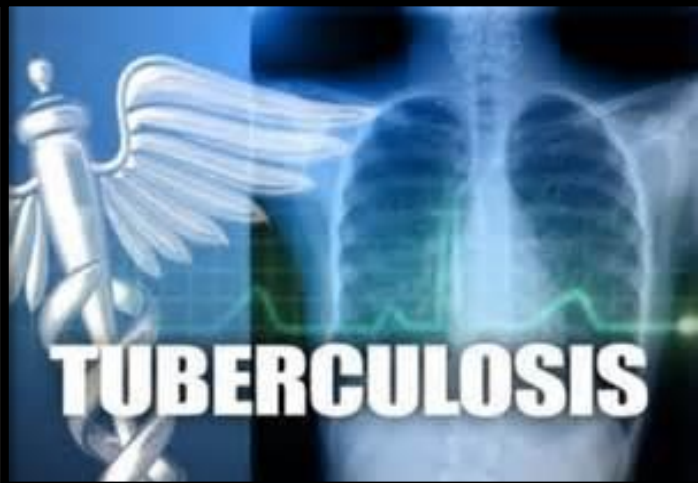
- Prepared by Rio Grande Council of Governments
- Multi-jurisdictional plan
- Framework for risk-based decision-making by policymakers
- Purpose of mitigation actions is reduce or eliminate long-term risk to people and property
- Reviewed by Texas Hazard Mitigation Officer and FEMA Region VI Administrator
- Adopted by all regional jurisdictions
- Approved by FEMA in 2015
- **Must** be in place to receive federal Hazard Mitigation Assistance (PDM, FMA, SRL, HMGP, Public Assistance)

# Local Elected Officials



- A disaster starts local and ends local!
- State and Feds provide tools and resources to help locals become self-sufficient and resilient
- Local govt. have responsibility to be proactive in mitigation policies to reduce risk (Annex P)
- Assign the agency that will lead hazard mitigation planning
- Direct role on planning team, or
- Indirect support by acting as champions of hazard mitigation planning activities
- Build public support – engage public with planning efforts – (ex. building code and zoning decisions)
- Mitigation is an investment

# DANGEROUS HEAT



# Risk Analysis

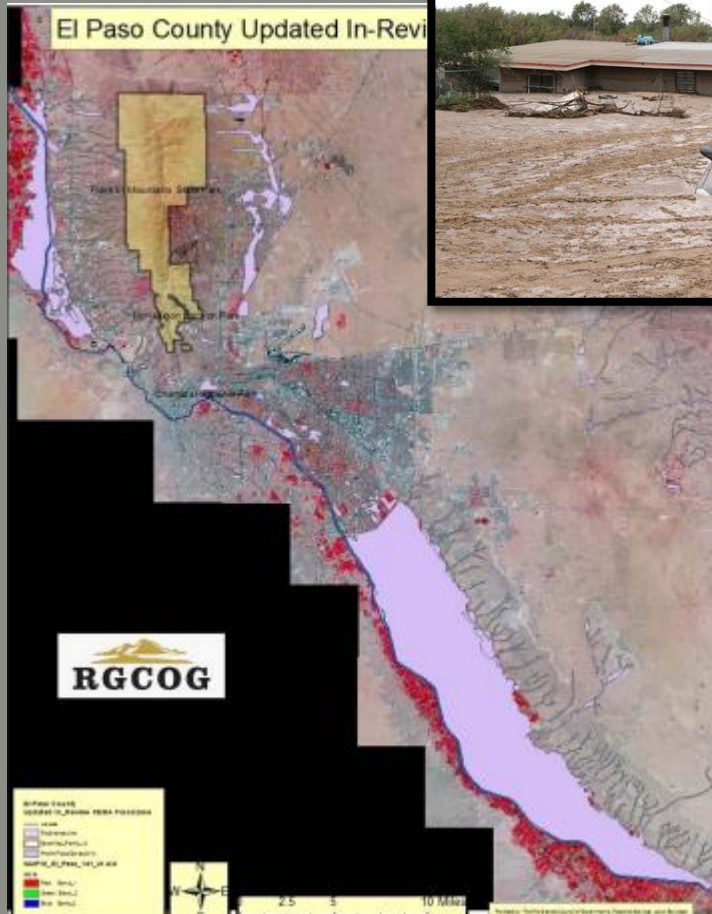


Note: Modified from U.S. Geological Survey and Oregon Partnership for Disaster Resilience Models.

**Figure 5.1: Community risk from natural hazards**

- ID hazards, impacts, and estimate losses
- Use exposures - What assets are located in hazard-prone areas? (GIS mapping)
- Use past events - weather
- Use scenarios or “what if” modeling tools SHEL DUS/ HAZUS - low frequency high consequence events
- Create a risk index to rank hazards

# Profile Hazard Events



Location

Extent or Severity

Previous Occurrences

Probability

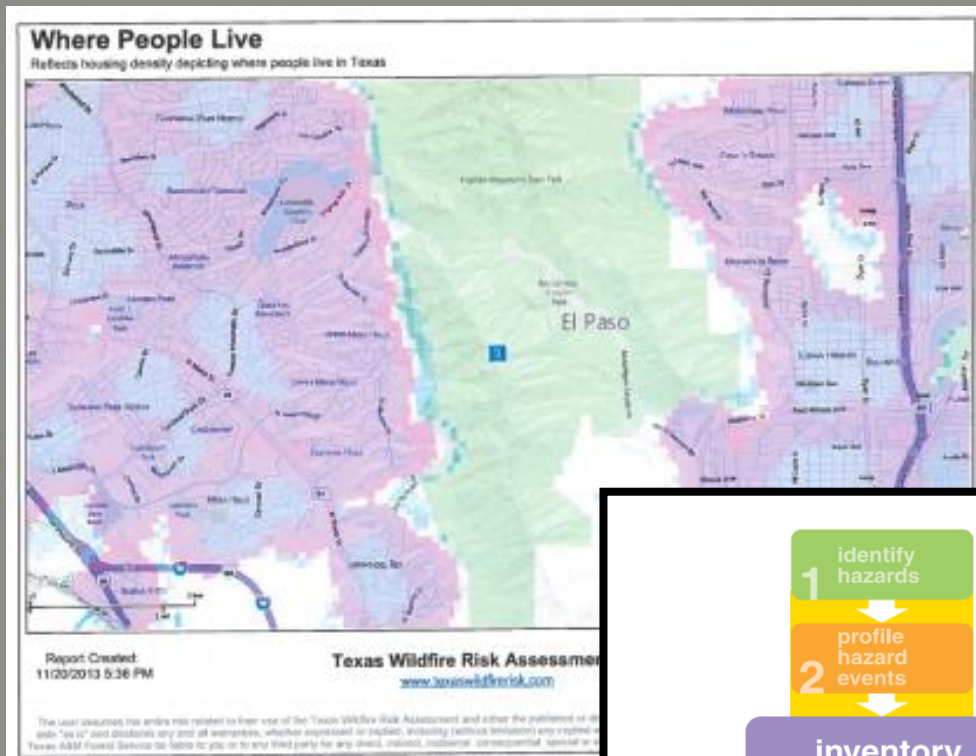
Impact

Changes in Development

Mitigation Accomplishments

Future Development

# Identifying Vulnerabilities



- Vulnerabilities – physical injury, harm, damage, or economic loss
- Community’s most significant risks and issue of concern
- Estimate potential losses (SHELDUS data)
- Analyze developing trends, increase/decrease in population (Ft. Bliss)
- Summary of overall vulnerability of identified hazards – findings and problem statements to help policymakers
- Next update, include persons with access and functional needs

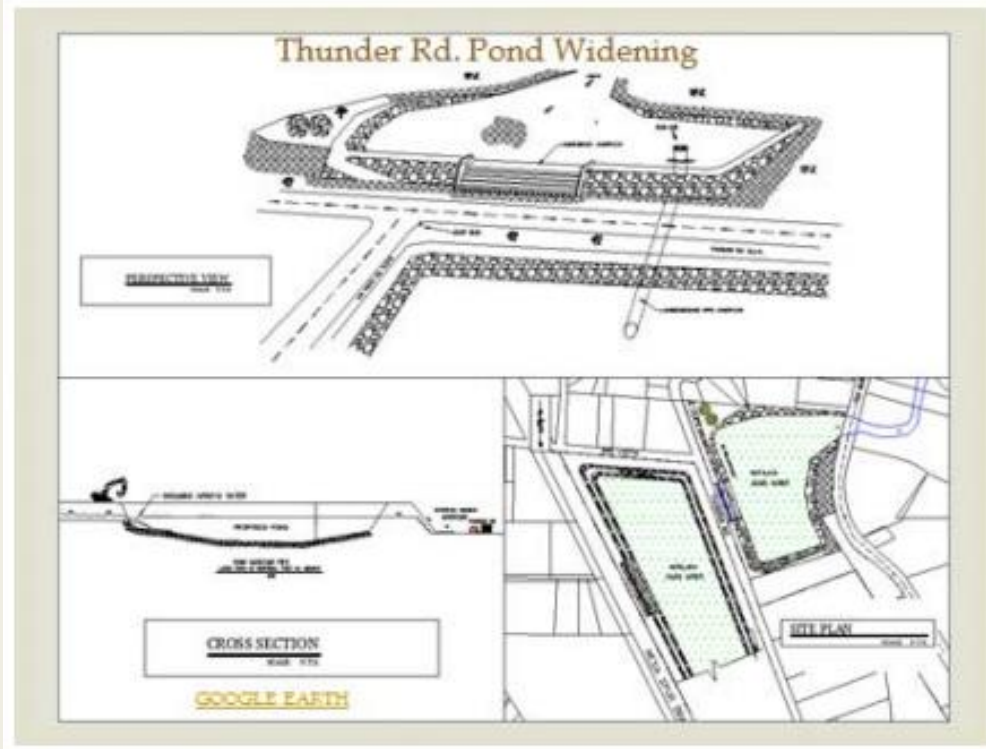
# Mitigation Strategy



- Make sure goals align with state's mitigation plan
- Mitigation actions are specific projects and activities
  - *Local Plans and codes, regulations*
  - *Infrastructure projects – eligible for FEMA HMAs*
  - *Natural systems protection – sediment control, erosion, wetlands restoration*
  - *Education and awareness programs – to public*
- Prioritize actions
- Implement action plan
- Must be economic, political, social feasible
  - (cost/benefit review)



Action Number (Prioritization)	Hazard	Action	Jurisdiction	Implementation Strategy
1	Flooding	Placement of concrete channel in the Sparks Arroyo. This will allow for the stormwater to be channeled into the retention pond, see figure 6.	City of Socorro	Responsibility: City of Socorro Timeframe: Jan.2014-On-going Method: Working in collaboration with El Paso County, RGCOG, EPWID, Lower Valley Water District Funding: CDBG, CDBG Disaster Relief, Hazard Mitigation Grant
3		Widen Thunder Rd Pond in order to increase stormwater capacity, see figure 7.	City of Socorro	Responsibility: City of Socorro Timeframe: Jan.2014-On-going Method: Working in collaboration with El Paso County, RGCOG, EPWID, Lower Valley Water District Funding: Hazard Mitigation Grant





# Is Your Completed Plan Effective?

- Who is monitoring the plan?
- How much progress have we made in implementing the mitigation strategy and actions? Status report?
- Are there any lessons learned from mitigation actions?
- Do priorities need to be changed due to recent situations? (political, economic, environmental conditions)
- Are there changes in participation or new jurisdictions?
- Are there changes in our community and surroundings? (land use, boundaries, new development, climate)
- Are we including human-caused (technological and terrorism) hazards? (not required but recommended)
- Are we including persons with access and functional needs? Visiting populations?
- How soon will our community be able to receive services after a disaster?

# How Can Local Jurisdictions Work with State Agencies on Mitigation Planning?

- Work with regional government organizations – RGCOCG
- Work with Disaster District Coordinators
- Work with Universities
- Local emergency management staff will have experience working with State Emergency Management on mitigation projects and activities
- State Hazard Mitigation Officer
- Align mitigation strategies with your State's plan
- State/FEMA tools and resources





“The time to repair the roof is when the sun is shining”

John F. Kennedy